

BINARY PHRASES - TERNARY EFFECTS - 6 BAR FIGURES

HELLO AND WELCOME BACK TO THE LEFT FOOT CLAVE WORKSHOPS. AS YOU CAN IMAGINE, MANY TYPES OF PHRASES CAN BE PLAYED BY SIMPLY ALTERING THE ORCHESTRATION OF PHRASES ON THE KIT. IN THESE EXAMPLES I WILL OUTLINE PHRASES THAT ARE BUILT USING SUBDIVISIONS IN "2" (OR BINARY). BUT THAT ARE CREATING "TERNARY EFFECTS" MEANING THAT THE ORCHESTRATIONS GIVE THE ILLUSION OF A MELODY IN "3".

A BINARY PHRASE: PHRASES THAT ARE BASED IN SUBDIVISIONS OF "2". SUCH AS: 8TH NOTES, 16TH NOTES ETC...

TERNARY EFFECT: A PHRASES THAT GIVES THE ILLUSION OF A CYCLE OF "3"

THE TERM "6 BAR FIGURE" SIMPLY MEANS THAT THE PHRASE CYCLES OUT AFTER 6 BARS.

NOW...THINGS TO KEEP IN MIND!! FIRST AND FOREMOST!

THESE ARE EXERCISES!! IN ORDER TO GET TO A POINT WHERE YOU CAN BE MUSICAL AND FREE TO EXPRESS WHATEVER YOU WOULD LIKE, CERTAIN TECHNICAL STEPS NEED TO BE TAKEN.

HERE THERE ARE 2 MAJOR THINGS WE ARE WORKING ON.

- 1) EXPANDING YOUR INDEPENDENCE FROM THE CLAVE.
- 2) WORKING YOUR EARS SO THAT THEY BECOME ACCUSTOMED TO CYCLIC STRUCTURES.

WHEN YOU PLAY THESE EXERCISES, IT WILL ALL BE LITTLE CLEARER :-)

EX 1

2-3 RUMBA CLAVE

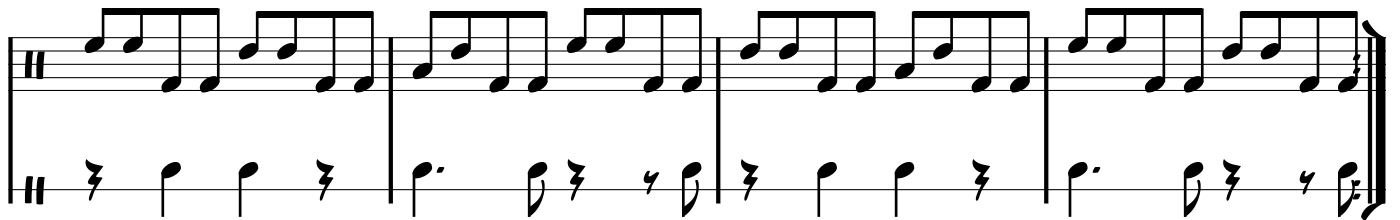
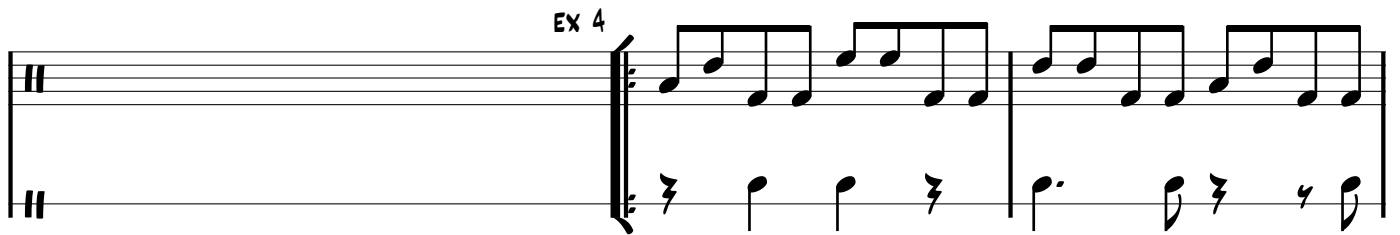
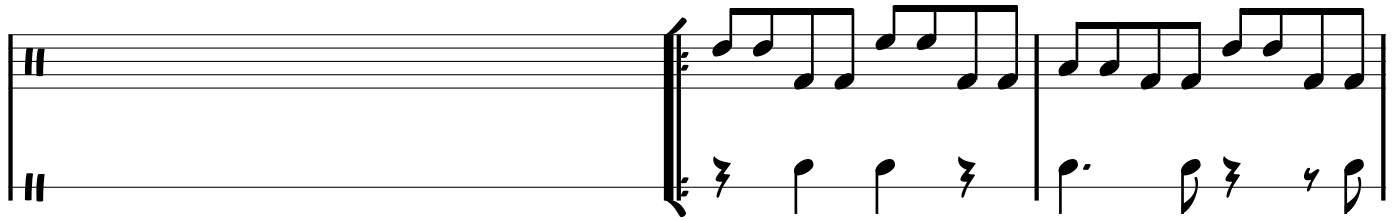
Example 1 shows a 2-3 Rumba Clave pattern on the bottom staff and a melody line on the top staff. The melody consists of eighth notes in a 2-3-2-3-2-3 pattern, creating a ternary effect. The notation includes a treble clef, a 2/4 time signature, and a repeat sign at the end of the 6-bar phrase.

Example 1 continues with the 2-3 Rumba Clave pattern and the melody line. The notation includes a treble clef, a 2/4 time signature, and a repeat sign at the end of the 6-bar phrase.

EX 2

Example 2 shows a 2-3 Rumba Clave pattern on the bottom staff and a melody line on the top staff. The melody consists of eighth notes in a 2-3-2-3-2-3 pattern, creating a ternary effect. The notation includes a treble clef, a 2/4 time signature, and a repeat sign at the end of the 6-bar phrase.

Example 2 continues with the 2-3 Rumba Clave pattern and the melody line. The notation includes a treble clef, a 2/4 time signature, and a repeat sign at the end of the 6-bar phrase.



PLEASE LISTEN CAREFULLY TO THE AUDIO PORTION OF THIS WORKSHOP AND ENJOY THE WORK! REMEMBER THAT THE CLAVE IS A TIME LINE STRUCTURE AND HELPS YOU IN ACHIEVING YOUR GOAL OF MUSICAL STRUCTURE, FLOW AND COHESION IN YOUR PLAYING. IN OTHER WORDS, IT IS THERE TO HELP YOU BUILD YOUR GOAL OF "MUSIC" IN YOUR PLAYING.

CLAVE= KEY...AS IN, THE KEY TO SOLVING A MYSTERY.

AMOR ES LA CLAVE....

LOVE IS THE KEY...

TOCA CON ALMA!

PHIL M